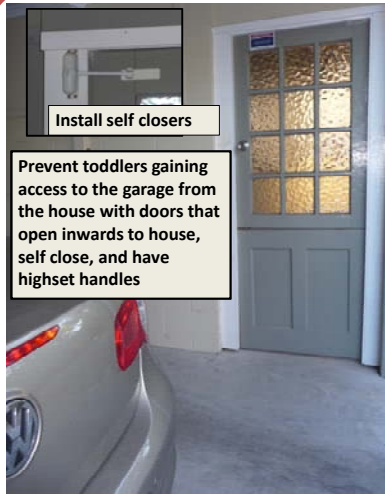


Supervise



Know where your children are before you move vehicles – hold them close or put them in the car with you

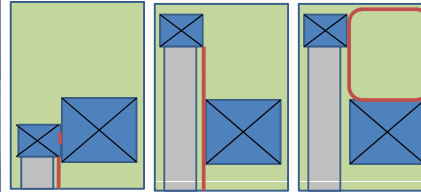


Install self closers

Prevent toddlers gaining access to the garage from the house with doors that open inwards to house, self close, and have highset handles

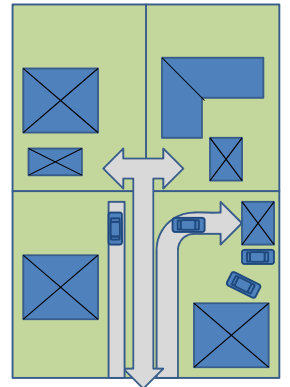


Fence your driveway from play areas



- INJURY RISK DECREASED BY:
- A separate pedestrian pathway to the sidewalk (twofold reduction)
- Fencing off driveway from play area

- INJURY RISK INCREASED BY:
- Driveway length >12m (x 2 increase)
 - Driveway exiting to a local road (x 5 increase) or cul-de-sac (x 2 increase) - vehicle speed likely to be higher and driver concentration likely to be lower if exiting a driveway onto a less busy road
 - Additional parking on property (x 3 increase) - requires more vehicle manoeuvring potentially on non driveway surfaces
 - Driveway positioned along one of the side boundary (x 3 increase)
 - Shared driveways
 - Curved driveway (x 2 increase)



Separate



DON'T GO IF YOU DON'T KNOW!



A MULTI-LAYERED APPROACH TO REDUCE RUNOVER RISK



See



Cameras are designed to prevent damage to vehicles – so think about kids when using a camera or sensors. Kids are quick and may not be seen in time



Wave bye bye from a safe place - not the driveway



Understand how little you can see behind your car – like these 62 preschoolers



The size of the car is not a good indicator